

STAMP, PUNCH & IDENTIFY WITH PRYOR

SUITABLE FOR ENGINEERING AND INDUSTRIAL USE, PRYOR OFFERS A WIDE RANGE OF LOW-COST, HANDHELD STAMPS USED FOR INDENTING CHARACTERS.

PRYOR
MARKING TECHNOLOGY

Pryor's premium punches are the choice of the professional engineer, offering a wide variety of character formations ideal for a range of marking applications on any type of material from aluminium to stainless steel, up to a maximum hardness of 38 Rockwell. All of the stamps in this range are hardened and tempered to precise limits and nickel-plated for rust protection thus providing maximum safety during use, long product life cycle and value for money.

HAND STAMPS

Styles are available in:

- Standard
- Reverse
- Heavy Duty
- Low stress-Mini stress
- Low stress-Dot stress

Available sizes:

1.0mm, 1.50mm, 2.0mm,
2.5mm, 3.0mm, 4.0mm, 5.0mm,
6.0mm, 8.0mm, 10.0mm and
12.5mm.

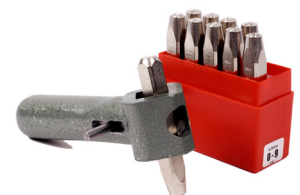
Standard punches have sharp-faced characters to produce clear positive impressions. Available in sets of 26 letters (A-Z), Scandinavian and Cyrillic sets of 30 stamps plus, figure sets of 10 stamps (0-9).

Reverse punches have sharp-

faced characters and are used when a clear negative impression is required, particularly in molding or cast applications.

Heavy duty punches have a larger blank thus giving greater strength and allowing a heavier blow to be struck, making these ideal for prolonged or industrial use.

Low stress punches are especially engineered for use in the aircraft, nuclear and gas industries or where reduced stress marking is required. For an even greater reduced stress level, the dot stress style may be used, where the character is impressed in a dot formation.

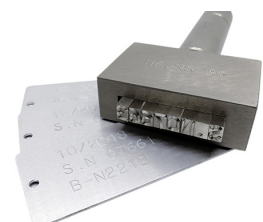
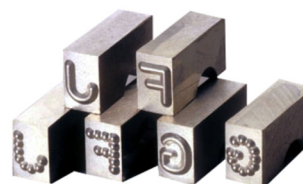


ISTS & FONT SET (INTERCHANGEABLE TYPES)

Ideal for all batch and general-purpose marking. Simply build a series of characters into a holder and with just one strike, produce a multi-character mark quickly and with uniform legibility. Pryor offers precision ground blanks and a clear character style to give quality marks with a consistent depth. Pryor types can be used in a hand holder with a hammer or for faster throughput, in a machine holder press.

Type pieces ranging from 1mm - 5mm are held firmly in place by means of a grub screw (Hexagon key supplied) for safety. Hand Holders for the larger type sizes, from 6mm - 10mm are designed with a retaining pin that fits through a groove in the type pieces for added user safety.

Styles available are standard, reverse, wedge, mini stress and dot stress.



MANUAL NUMBERING HEADS

Consists of manual and automatic indexing units, ideal for random changing inscriptions and batch marking of parts. Simply rotate the wheels to any given inscription, using the tell-tale characters for guidance and make a mark of consistent quality every time. Numbering heads are quick and easy to use and will mark sharp-faced positive impressions into most plastics and many metals up to 38 Rockwell.

Manual numbering heads can be used by hand with a hammer or press. The wheels are rotated to any value by hand (no tools required) and locked into position. A complete inscription can be changed in seconds, making these an ideal tool for random changing inscriptions.



AUTOMATIC NUMBERING HEADS

Able to fit most types of marking machines and fly presses. Allows fast, accurate and consecutive serial numbering of parts with minimal effort. An automatic numbering head is fitted with an actuating lever, which when pressed by hand, trip lever or pneumatic valve, will rotate the wheels to give a consecutive numbering sequence. Pryor has the design skills and manufacturing capabilities to produce special wheels and numbering units to meet any industry needs.

Custom Options

- Special engraved wheels - any character can be engraved into a blank wheel (within size limits) for marking logo's, symbols and letters, providing the solution for exact numbering requirements.
- Character forms can be sharp-faced, flat-faced, mini-stress or dot-stress. Characters can also be condensed or broadened to any special style. Concave or convex characters can also be provided.

